



# MONTHLY MEMBERSHIP PROGRESS REPORT

District 322C1

Results as of: 5/31/2017

GMT: NAZMUL HAQUE

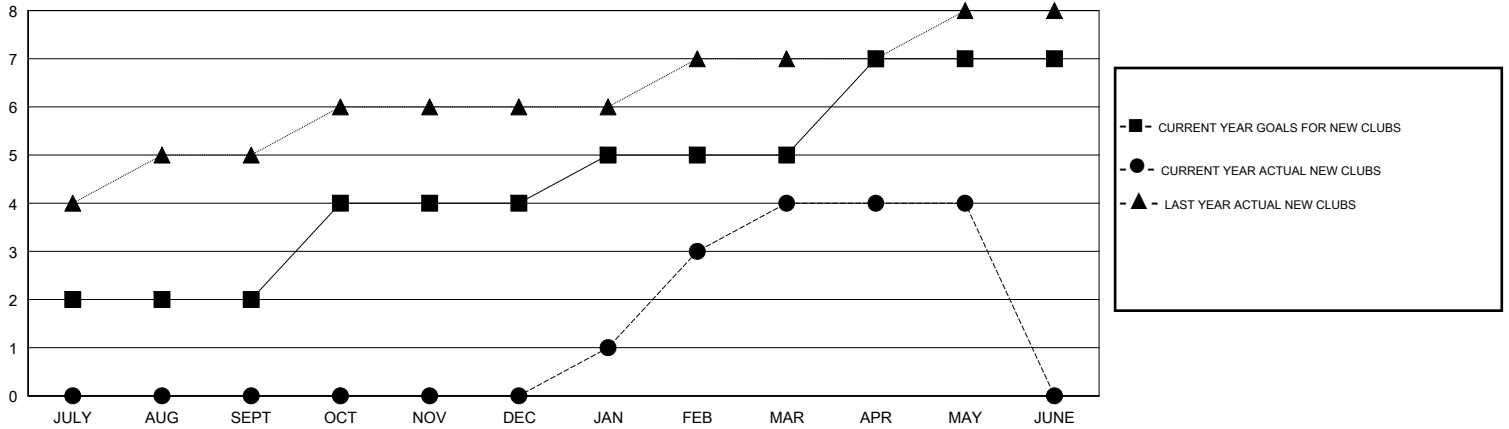
LOCATION INDIA

GMT CA

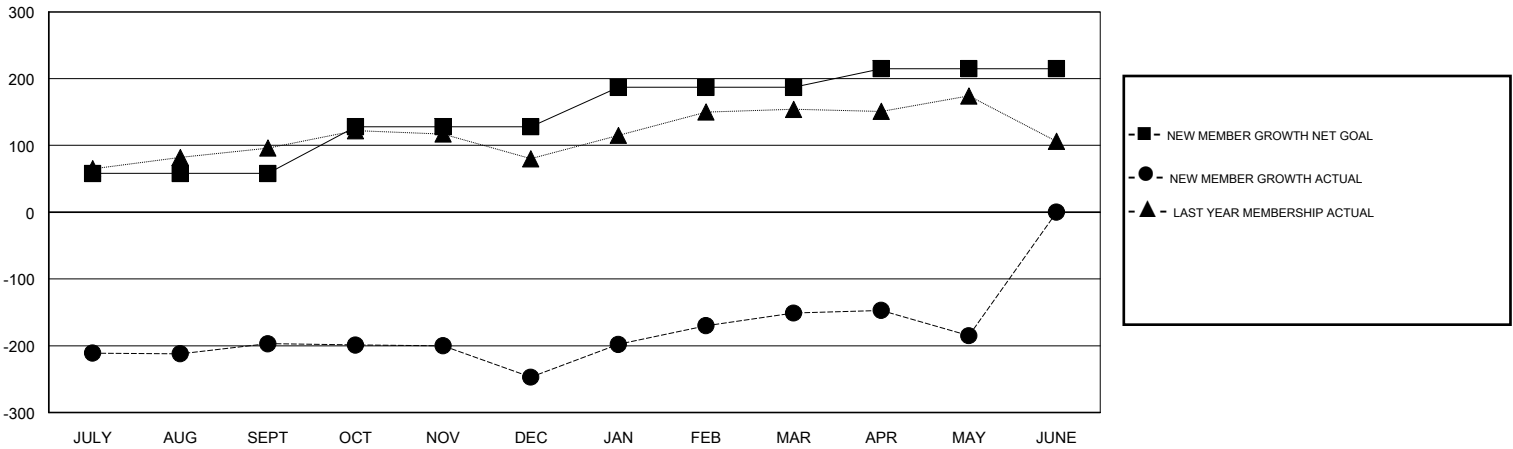
Clubs			
RESULTS FOR 2016-2017			
QUARTER	NEW CLUB GOAL	NEW CLUBS	DROPPED CLUBS
JULY/AUG/SEPT	2	0	1
OCT/NOV/DEC	2	0	2
JAN/FEB/MAR	1	4	0
APR/MAY/JUNE	2	0	1

Members			
RESULTS FOR 2016-2017			
QUARTER	NEW MEMBER GROWTH NET GOAL (not reinstated or transfers)	NEW MEMBER GROWTH ACTUAL (not reinstated or transfers)	DROPPED MEMBERS ACTUAL (including transfers)
JULY/AUG/SEPT	58	72	269
OCT/NOV/DEC	70	16	66
JAN/FEB/MAR	59	159	63
APR/MAY/JUNE	28	11	45

GOALS AND ACTUAL NEW CLUBS CUMULATIVE



GOALS AND ACTUAL MEMBERS CUMULATIVE



DROPPED CLUBS: 4	61 CLUBS OF 102 ADDED 1 OR MORE NEW MEMBERS	<u>GENDER DISTRIBUTION</u>	
DROPPED MEMBERS		MALE	2,260 (76.12%)
DECEASED	<a href="#">CLICK HERE FOR CUMULATIVE MEMBERSHIP DATA</a>	FEMALE	709 (23.88%)
CLUB CANCELLED		TOTAL FAMILY UNIT MEMBERS	1,406
OTHER		FAMILY MEMBERS PAYING HALF DUES	817
TOTAL		443	